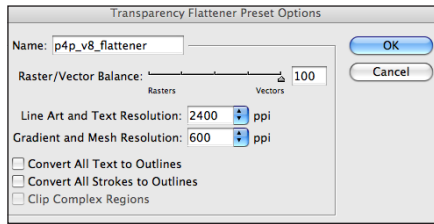


# InDesign CS5.5 - Imago PDF instructions

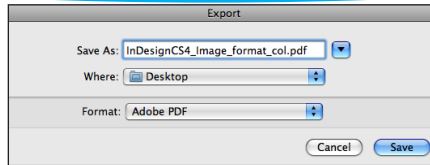
Settings shown for InDesign CS5.5 on Mac OS X 10.5.8. Imago recommend Fogra 39 as your colour profile for CMYK on coated papers.

- Refer to the general points below before making your PDFs.
- First set up the Adobe PDF Preset to match the CS5\_Col\_PDF\_Imago\_v1\_12 settings shown below following the detailed instructions. Once this is done and all your images and fonts are correctly linked to your InDesign document, then all you do to make your PDF is:

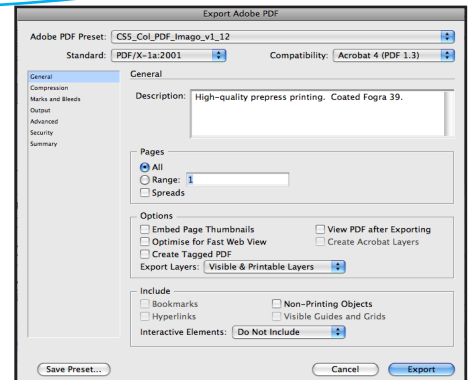
1. **File > Export > Name with .pdf and Save**
2. **Choose Preset** (to match CS5\_Col\_PDF\_Imago\_v1\_12) and **Export**.



1. Set up your **Transparency Flattener Presets**. Go to **Edit > Transparency Flattener Presets**. Name the preset and enter details as shown above. Click **OK** to store the settings.

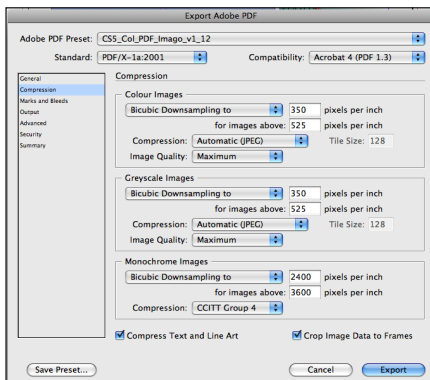


2. Then go **File > Export**. In Format select **Adobe PDF**. Then name the file, select where your saved PDFs are to go, and then click **Save**. The Export PDF settings then come up.

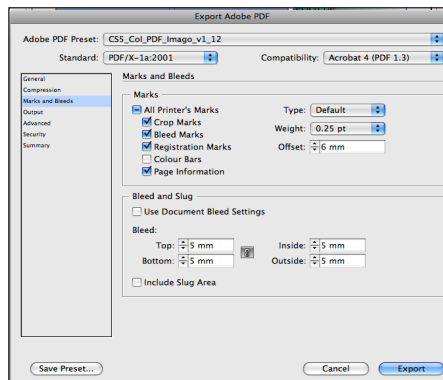


3a. Start with the Adobe PDF Preset: **Press Quality**, and edit it following these instructions to create your own preset to match CS5\_Col\_PDF\_Imago\_v1\_12. Then **Save Preset**

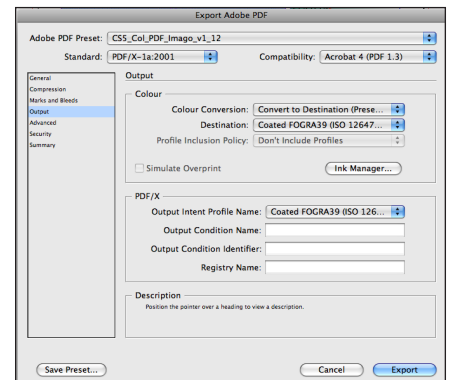
3b. In the **General** tab, set **Compatibility** to **Acrobat 4 (PDF 1.3)** for your combined or neutral col PDFs. Set **Standard** to **PDF/x-1a** or none. Set the rest of this window as shown above.



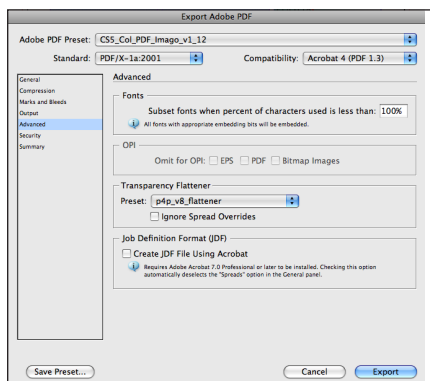
4. Click on the **Compression** tab and set all as shown above. Setting **Compression** to **Automatic** and **image Quality** to **Maximum**.



5. Click on **Marks and Bleed** next. Set as shown enabling **Printer's Marks** and setting **Bleed** and **Offset** to **5mm** (OK to use 3mm, but no less. Advantage of setting higher is if PDFs are later re-used to smaller size.)

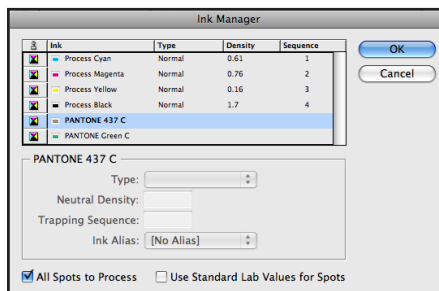


6. In **Output** select **Colour Conversion** as above to **Convert to Destination (Preserve Numbers)**. Preserve numbers is important to prevent type or tints changing colour. Set **Destination** to **Coated Fogra 39** or as appropriate for your work. Ensure you **Don't Include Profiles**.



7. In **Advanced** select the **Transparency Flattener** preset you created in Step 1. **Fonts** - set as shown to embed and subset. Do not enable any of the **Security** settings, or the printer may not be able to use your PDF.

**Summary** check your selected settings.



8. **Ink Manager** under **Output** is a quick way to check the colours in your file are all CMYK. If spot colours are used in error change them here to CMYK process colours by clicking on **All Spots to Process**. If the job is just a spot colour one, you can check that no process colours are appearing.

If printing with *rhodamine* or with *spot colours* only set to *No Colour Conversion*. But for CMYK plus spot colours use standard settings as shown above.)

## General points

**Layers:** Place colour elements on the base layer and all text on separate layer above. Create colour or black text only PDFs by hiding the layer you do not wish to include in the PDF.

**Co-eds:** Supply colour as a neutral (no text) composite CMYK PDF, and for each language a separate composite black text only PDF.

**PDF vsn & Transparency:** For Co-editions with transparent elements on the text layer, supply text PDFs as version 1.4 (Printer to combine and flatten). All other PDFs supply as flattened vsn 1.3. PDFs.

**PDF/x-1a** - good standard to use in PDF creation, but cannot be used for version 1.4 PDFs. When creating unflattened 1.4 PDFs set this to None.

**Fogra 39:** The colour profile for printing CMYK on coated paper. See Imago's website for instructions on setting up your Adobe colour settings correctly.